

Schleifeiste

Schleifeiste

"VH-Bow"
Konstruktion: F. Heindler // Umsetzung CAD: DS
Version 1.0 vom 11.01.2020

CoG 76.5mm 4%STM

AB HA
KE2L X08H

Schleifeiste

Schleifeiste

1

2

3

4

5

6

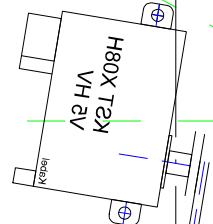
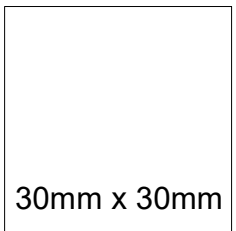
7

<= Balsa 120gr =>

<= Balsa 95gr =>

<= B

CoG 76.5mm 4%STM

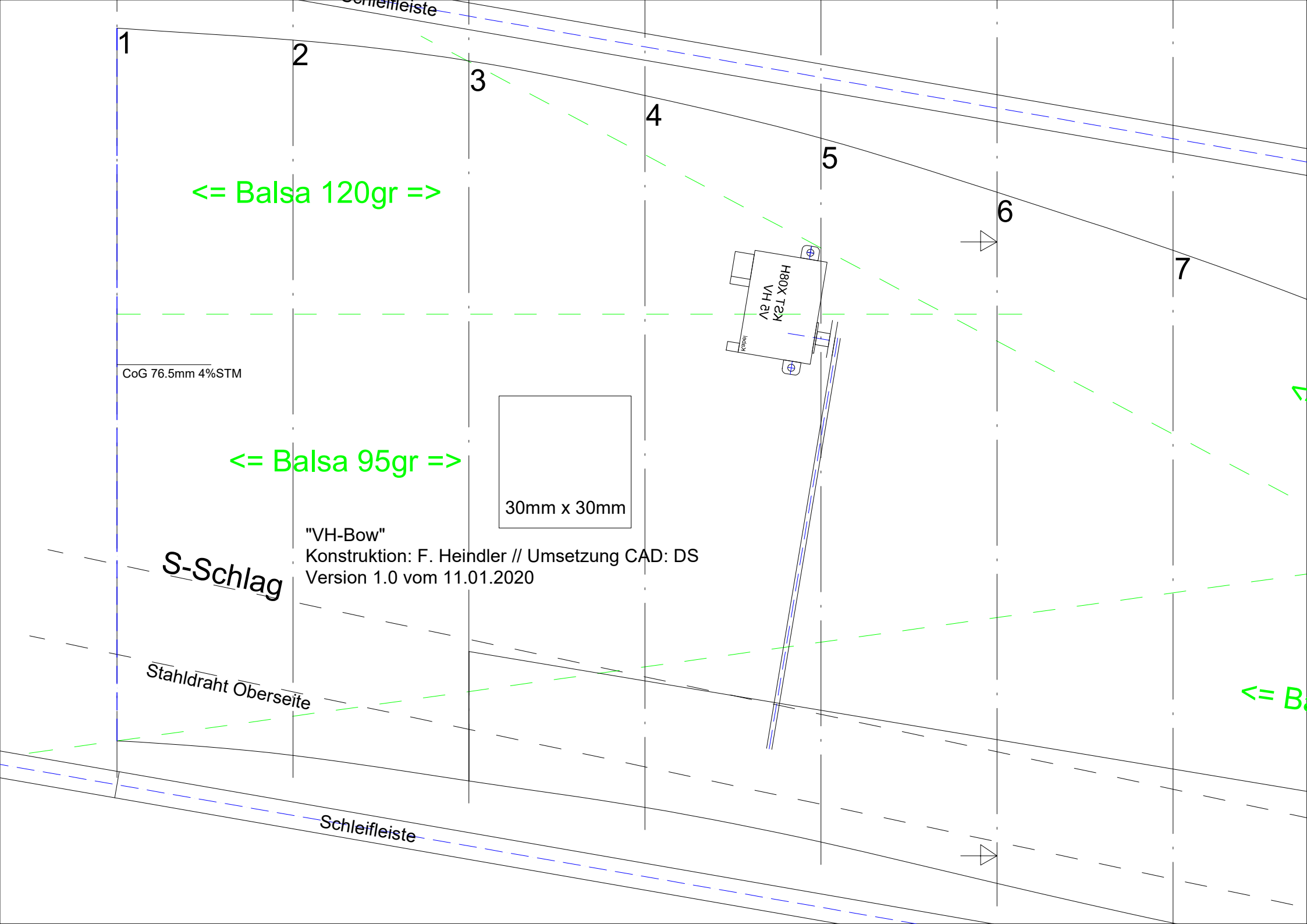


"VH-Bow"
Konstruktion: F. Heindler // Umsetzung CAD: DS
Version 1.0 vom 11.01.2020

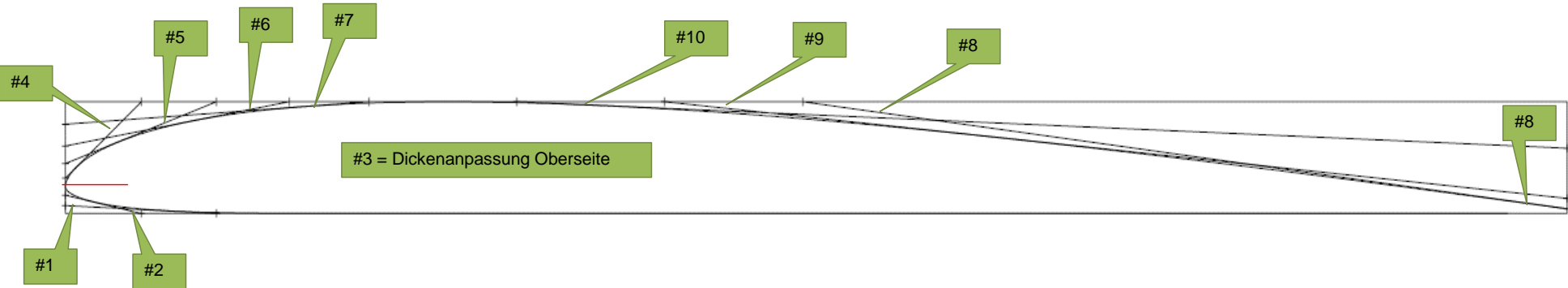
S-Schlag

Stahldraht Oberseite

Schleifleiste







1

#1

2

#2

3

4

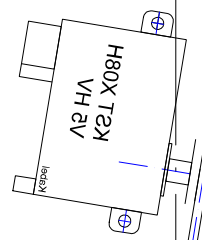
5

6

7

CoG 76.5mm 4%STM

30mm x 30mm

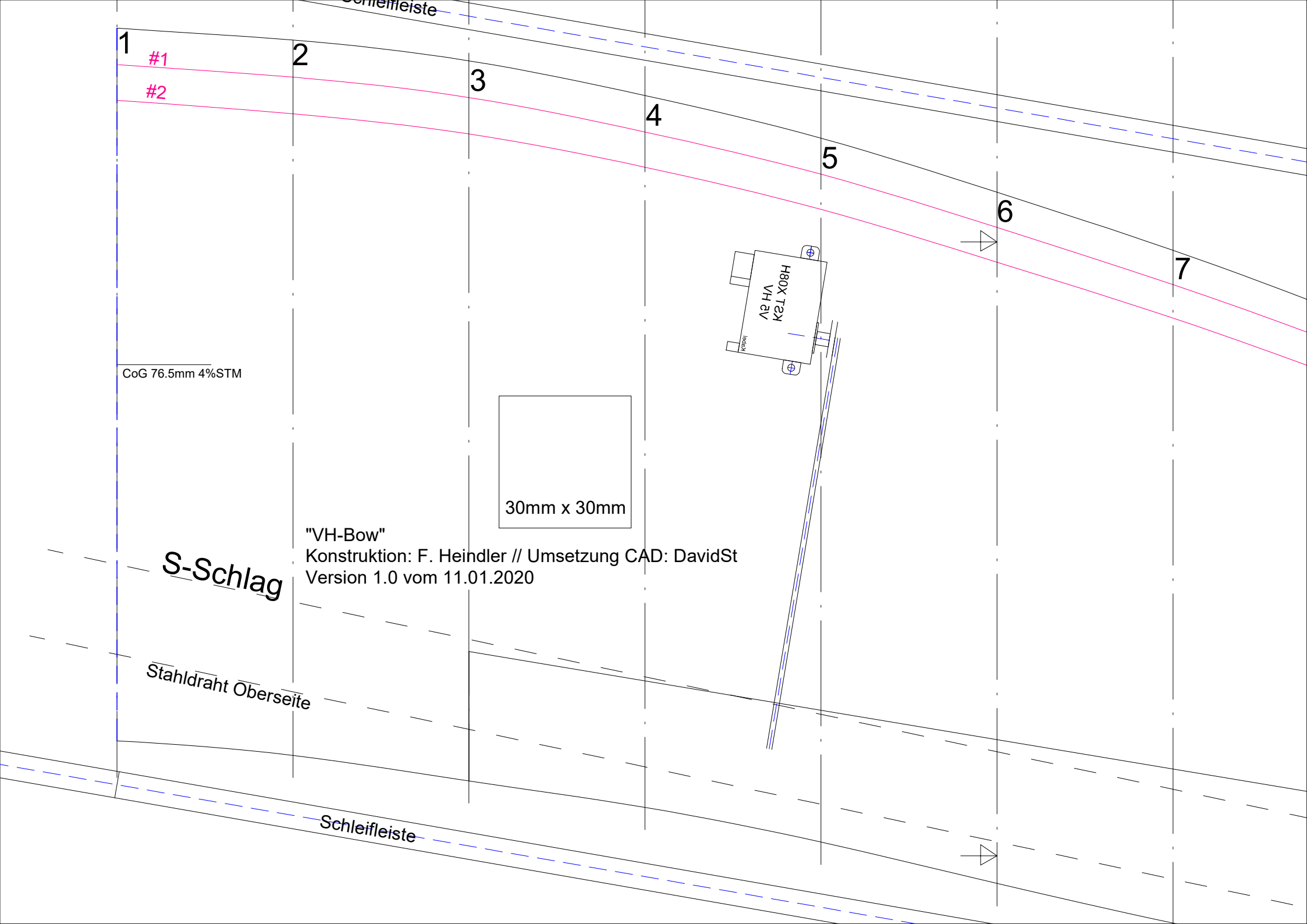


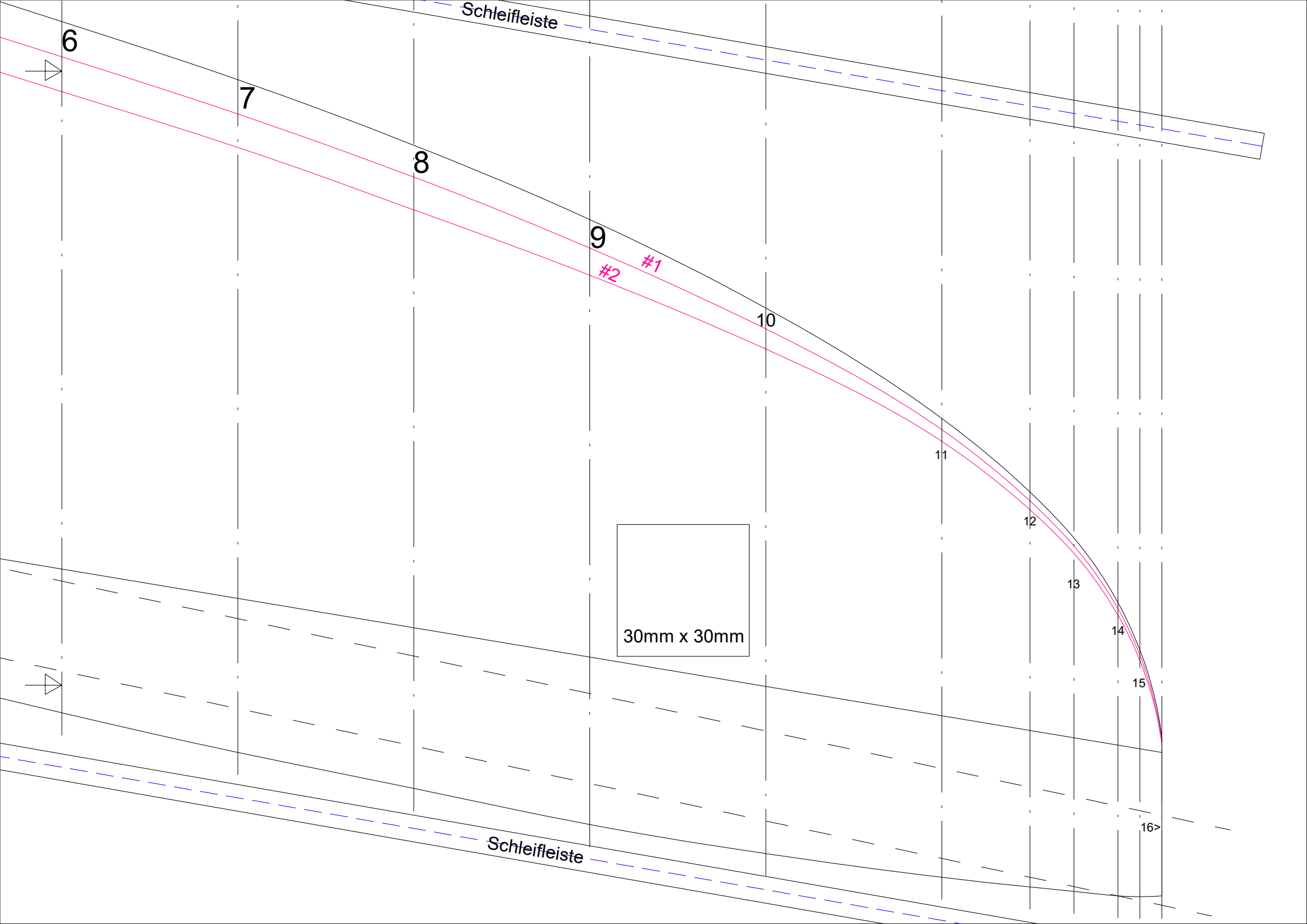
"VH-Bow"
 Konstruktion: F. Heindler // Umsetzung CAD: DavidSt
 Version 1.0 vom 11.01.2020

S-Schlag

Stahldraht Oberseite

Schleifleiste





Schleifleiste

6

7

8

9

#2

#1

10

11

12

13

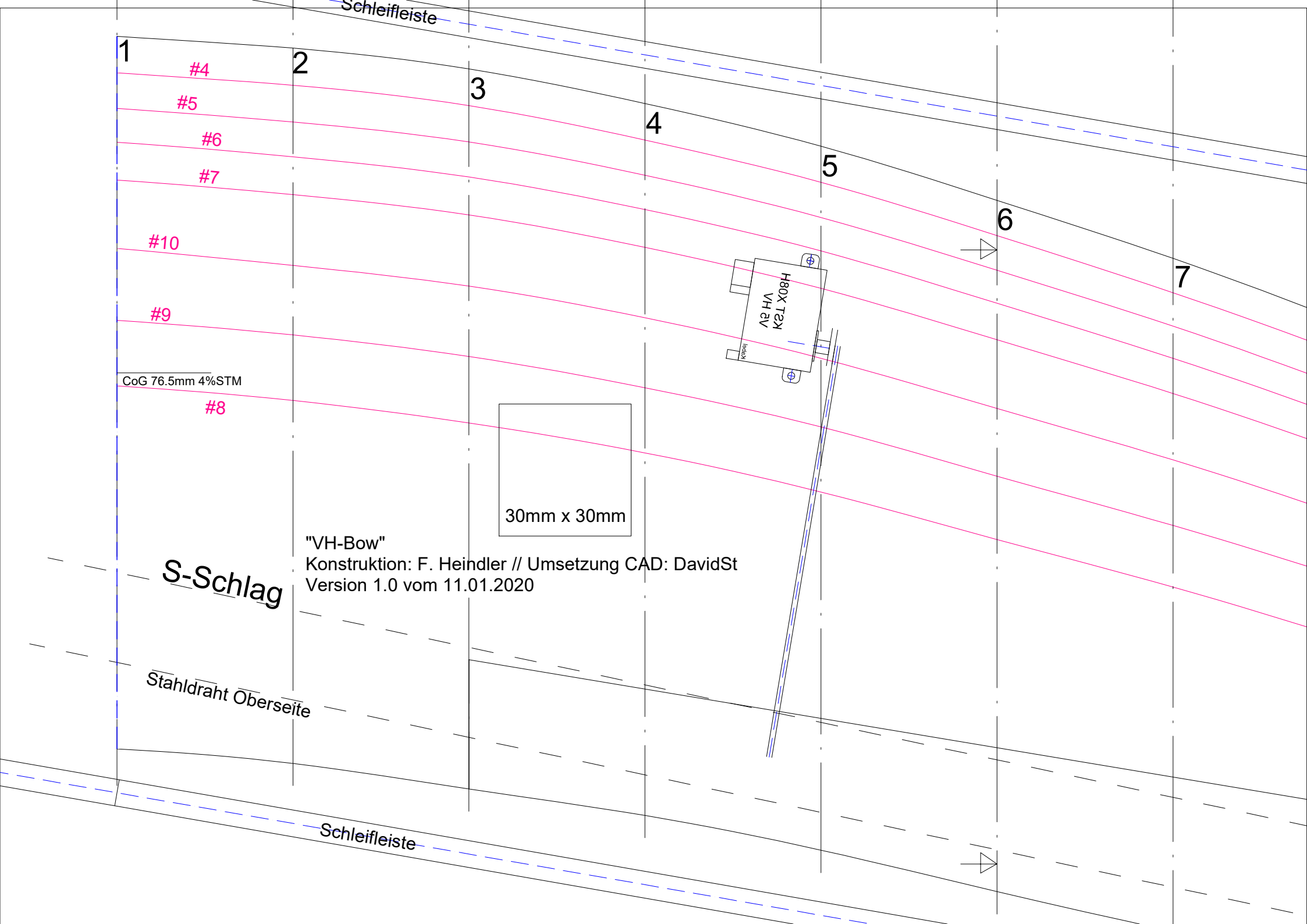
14

15

16>

30mm x 30mm

Schleifleiste



Schleifleiste

1

2

3

4

5

6

7

#4

#5

#6

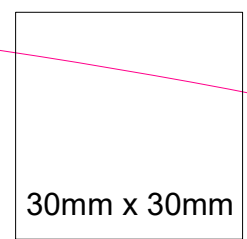
#7

#10

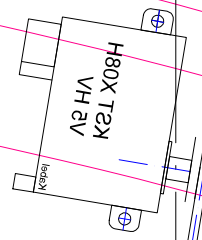
#9

#8

CoG 76.5mm 4%STM



30mm x 30mm



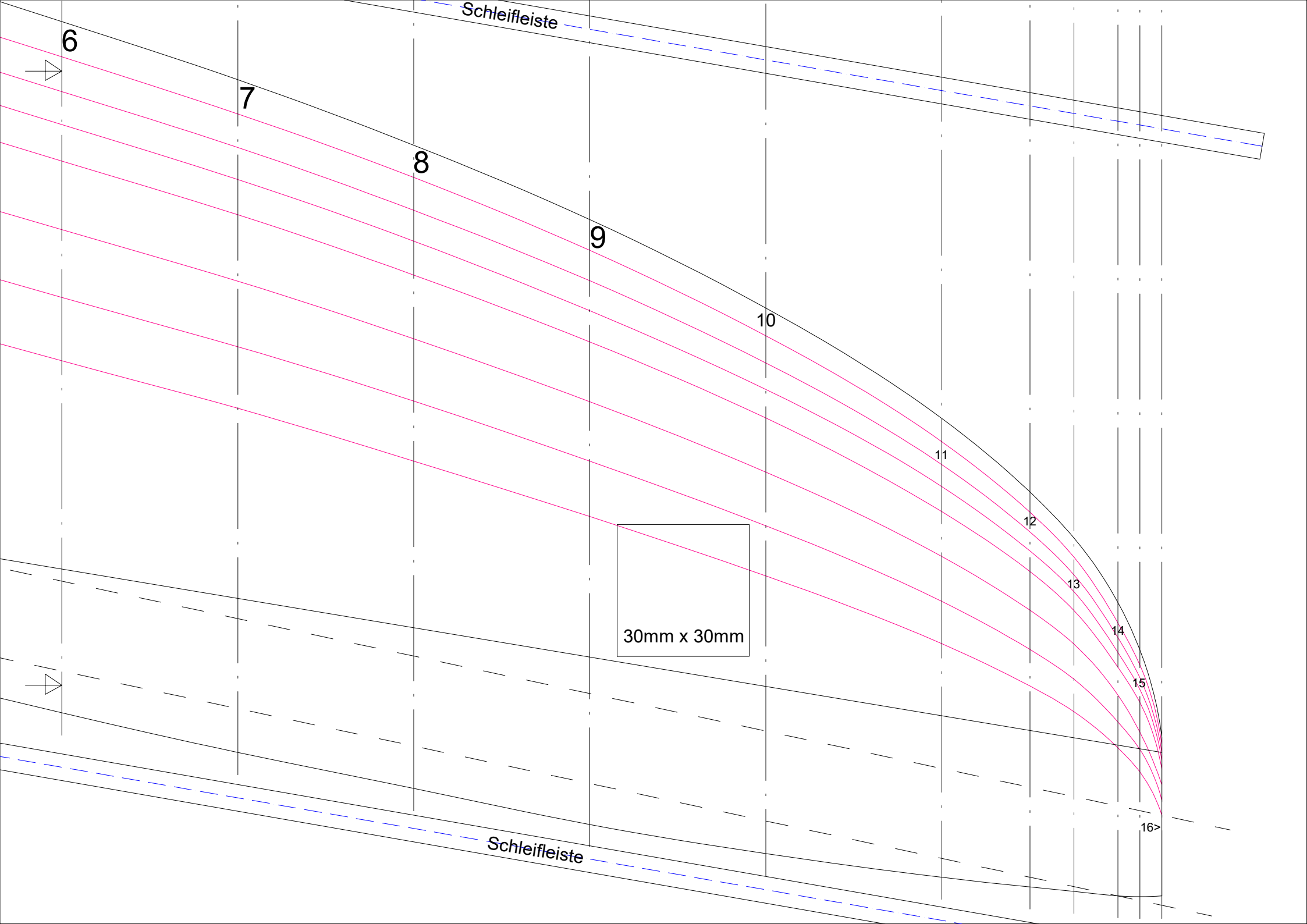
"VH-Bow"
Konstruktion: F. Heindler // Umsetzung CAD: DavidSt
Version 1.0 vom 11.01.2020

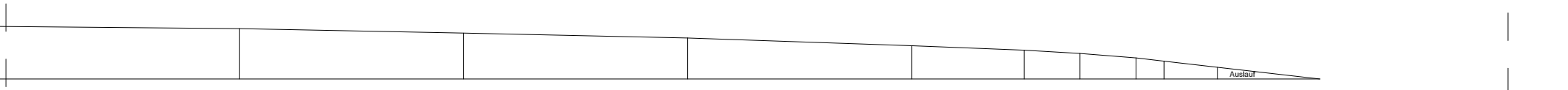
S-Schlag

Stahldraht Oberseite

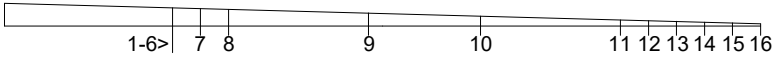
Schleifleiste







Keil für Sehnenhöhe



SLW V1.1
VH-BOW
A=1.3dm²

30x30

"VH-Bow"
Konstruktion: F. Heindler // Umsetzung CAD: Davidst
Version 1 vom 18.01.2020